



LARIO
INDUSTRY



Catalogo tubi e raccordi CUPRONICHEL 90/10

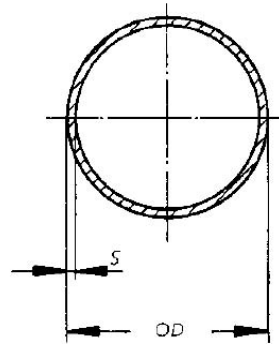
Catalogo Cupronickel 90/10

Standard Internazionali:

- ASTM-B-111
- DIN 86019 2.1972
- EEMUA 144 UNS 7060x
- ASTM-B-466 C70600
- DIN 17664/17671 2.0872
- BS 2871 CN 102
- MIL-T-16420 K C 70600
- JIS H3300 C7060T

Tubi senza saldatura

- senza saldatura (range da 6 a 219 mm OD)



Dimensione			Spessore Parete Standard			
DN		OD				
inch	mm	mm	S	Kg/m	S	Kg/m

	4	8	1	0.20		
1/8	6	10	1	0.25		
1/4	8	12	1	0.31		
3/8	12	16	1	0.42	1.5	0.61
1/2	16	20	1	0.53	1.5	0.78
3/4	20	25	1.5	0.99	2	1.29
1	25	30	1.5	1.19	2	1.56
1 1/4	32	38	1.5	1.53	2	2.01
1 1/2	40	44.5	1.5	1.80	2	2.38
2	50	57	1.5	2.33	2	3.07
2 1/2	65	76.1	2	4.14	2.5	5.14
3	80	88.9	2	4.86	2.5	6.04
4	100	108	2.5	7.37	3	8.80
5	125	133	2.5	9.12	3	10.90
6	150	159	2.5	10.93	3	13.08
7	175	194	3	16.01		
8	200	219.1	3	18.12	3.5	21.09

Tubi con saldatura

- con saldatura (range fino a 914 mm OD)

Dimensione			Spessore Parete Standard	
DN		OD		
inch	mm	mm	S	Kg/m

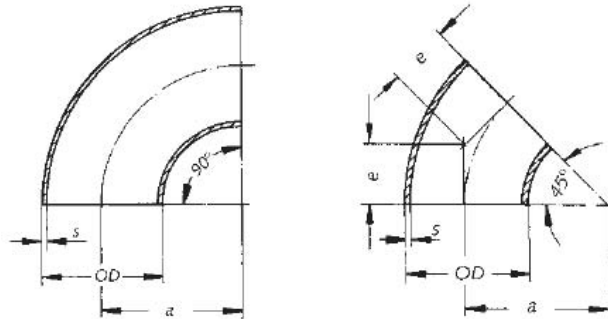
20	500	508	5	70.28
24	600	610	5	84.53
28	700	711	6	118.20
32	800	813	6	135.30
36	900	914	8	202.55

NOTA: A richiesta sono disponibili altre misure di spessore e diametri sia per tubi senza saldatura e con saldatura.

Butt Welding Fittings

Curve (Long Radius) 1.5 D

Con e senza saldatura



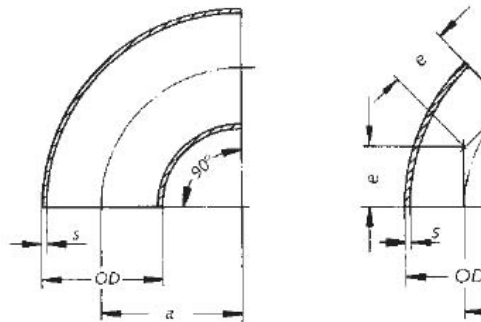
Dimensione		Spessore Parete	Raggio	e	Peso approssimativo (kg)	
DN	OD				s	a
inch	mm	mm	mm	mm		

1/2	16	20	1	25	10.4	0.013	0.026
3/4	20	25	1.5	27.5	11.4	0.029	0.058
1	25	30	1.5	33.5	14	0.030	0.06
1 1/4	32	38	1.5	45	19	0.06	0.12
1/2	40	44.5	1.5	51	21	0.07	0.14
2	50	57	1.5	72	30	0.13	0.26
2 1/2	65	76	2	95	39	0.31	0.62
3	80	89	2	114.5	47	0.44	0.88
4	100	108	2.5	142.5	59	0.88	1.66
5	125	133	2.5	181	75	1.30	2.60
6	150	159	2.5	216	89	1.85	3.70
7	175	194	3	270	112	2.85	5.70
8	200	219	3	305	126	4.35	8.70
10	250	267	3	378	157	6.55	13.10
12	300	324	4	457	189	12.80	25.60
14	350	368	4	533.5	221	17.00	34.00
16	400	419	4	609.5	252	24.85	49.70
18	450	457	4.5	686	284	30.95	61.90
20	500	508	5	762	316	41.95	83.90
24	600	610	5	914	379	60.75	121.50
28	700	711	6	1067	442	99.00	198.00
32	800	813	6	1219	505	129.50	259.00
36	900	914	8	1372	568	218.50	437.00

Le curve da 45° e 90° sono disponibili a richiesta in tutte le misure

Curve (Short Radius) 1.0 D

Con e senza saldatura



Dimensione			Spessore Parete	Raggio	e	Peso approssimativo (kg)	
DN		OD	s	a		45°	90°
inch	mm	mm	mm	mm	mm		

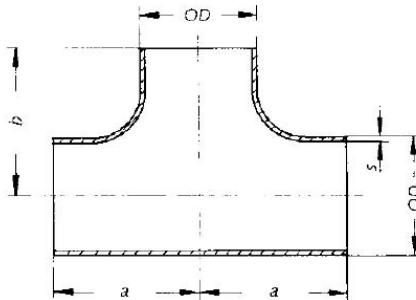
1	25	30	1.5	30	12	0.027	0.054
1 1/4	32	38	1.5	32.5	14	0.033	0.076
1 1/2	40	44.5	1.5	40	17	0.057	0.144
2	50	57	1.5	52.5	22	0.10	0.20
2 1/2	65	76	2	70	29	0.23	0.46
3	80	89	2	82.5	34	0.32	0.64
4	100	108	2.5	100	41	0.58	1.16
5	125	133	2.5	125	52	0.90	1.80
6	150	159	2.5	150	62	1.30	2.60
7	175	194	3	180	75	1.90	3.80
8	200	219	3	210	87	3.00	6.00
10	250	267	3	255	106	4.44	8.88
12	300	324	4	305	126	8.55	17.10
14	350	368	4	352.5	146	11.30	22.60
16	400	419	4	400	166	16.40	32.80
18	450	457	4.5	457	189	20.45	40.90
20	500	508	5	508	210	28.10	56.20
24	600	610	5	610	253	40.50	81.00
28	700	711	6	711	295	66.00	132.00
32	800	813	6	813	337	86.50	173.00
36	900	914	8	914	379	145.50	291.00

Le curve da 45° e 90° sono disponibili a richiesta in tutte le misure

Tee

Tipo e costruzione:

i tee per pipe fino a 219 mm incluso, sono normalmente forniti come "pezzo unico" e senza saldatura



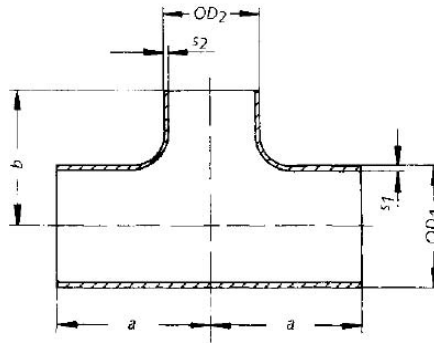
Dimensione			Spessore parete S	a	b	Peso approssimativo
inch	mm	OD				

inch	mm	OD	mm	mm	mm	Kg
1/2	16	20	1	25	25	0.11
3/4	20	25	1.5	29	29	0.14
1	25	30	1.5	38	38	0.18
1 1/4	32	38	1.5	48	48	0.22
1 1/2	40	44.5	1.5	57	57	0.31
2	50	57	1.5	64	64	0.45
2 1/2	65	76	2	76	76	1.07
3	80	89	2	86	86	2.33
4	100	108	2.5	105	105	2.85
5	125	133	2.5	124	124	3.41
6	150	159	2.5	143	143	4.71
8	200	219	3	178	178	7.25
10	250	267	3	324	289	19.20
12	300	324	4	380	347	30.48
14	350	368	4	407	384	38.50
16	400	419	4	440	435	49.10
18	450	457	4.5	500	479	56.80
20	500	508	5	540	529	77.31

Tee Ridotti

Tipo e costruzione:

i tee per pipe fino a 219 mm incluso, sono normalmente forniti come "pezzo unico" e senza saldatura

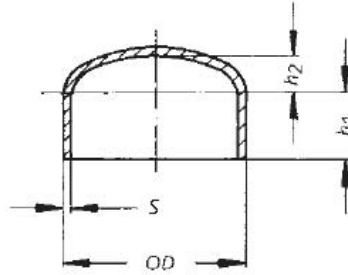


Dimensione OD1xOD2		Spessore S1xS2	a	b	Peso approssimativo
DN					
inch	mm	mm	mm	mm	Kg

¾ x ½	20 x 16	25 x 20	1.5 x 1	29	26	0.05
1 x ½	25 x 16	30 x 20	1.5 x 1	38	29	0.07
1 x ¾	25 x 20	30 x 25	1.5 x 1.5	38	35	0.07
1¼ x ½	32 x 16	38 x 20	1.5 x 1	48	33	0.12
1¼ x ¾	32 x 20	38 x 25	1.5 x 1.5	48	35	0.125
1¼ x 1	32 x 25	38 x 30	1.5 x 1.5	48	42	0.125
1½ x ½	40 x 16	44.5 x 20	1.5 x 1	57	36	0.185
1½ x ¾	40 x 20	44.5 x 25	1.5 x 1.5	57	40	0.185
1½ x 1	40 x 25	44.5 x 30	1.5 x 1.5	57	45	0.185
1½ x 1¼	40 x 32	44.5 x 38	1.5 x 1.5	57	51	0.185
2 x ¾	50 x 20	57 x 25	1.5 x 1.5	64	47	0.280
2 x 1	50 x 25	57 x 30	1.5 x 1.5	64	51	0.285
2 x 1¼	50 x 32	57 x 38	1.5 x 1.5	64	57	0.285
2 x 1½	50 x 40	57 x 44.5	1.5 x 1.5	64	63	0.290
2½ x 1	65 x 25	76 x 30	2 x 1.5	76	56	0.650
2½ x 1¼	65 x 32	76 x 38	2 x 1.5	76	62	0.650
2½ x 1½	65 x 40	76 x 44.5	2 x 1.5	76	71	0.650
2½ x 2	65 x 50	76 x 57	2 x 1.5	76	73	0.650
3 x 1¼	80 x 32	89 x 38	2 x 1.5	86	73	0.820
3 x 1½	80 x 40	89 x 44.5	2 x 1.5	86	76	0.900
3 x 2	80 x 50	89 x 57	2 x 1.5	86	80	1.10
3 x 2½	80 x 65	89 x 76	2 x 2	86	83	1.25
4 x 1½	100 x 40	108 x 44.5	2.5 x 1.5	105	89	2.30
4 x 2	100 x 50	108 x 57	2.5 x 1.5	105	90	2.45
4 x 2½	100 x 65	108 x 76	2.5 x 2	105	92	2.50
4 x 3	100 x 80	108 x 89	2.5 x 2	105	96	2.60
5 x 2	125 x 50	133 x 57	2.5 x 1.5	124	98	3.20
5 x 2½	125 x 65	133 x 76	2.5 x 2	124	105	3.30

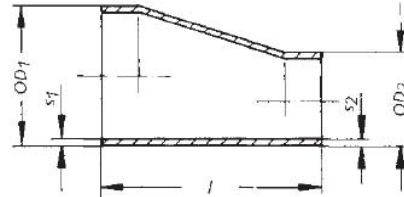
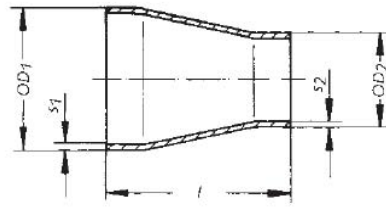
5x 3	125 x 80	133 x 89	2.5 x 2	124	108	3.40
5x 4	125 x 100	133 x 108	2.5 x 2.5	124	117	3.51
6 x 2½	150 x 65	159 x 76	2.5 x 2	143	118	4.05
6x 3	150 x 80	159 x 89	2.5 x 2	143	121	4.15
6x 4	150 x 100	159 x 108	2.5 x 2.5	143	130	4.31
6x 5	150 x 125	159 x 133	2.5 x 2.5	143	136	4.51
8x 4	200 x 100	219 x 108	3 x 2.5	178	156	6.15
8x 5	200 x 125	219 x 133	3 x 2.5	178	162	6.30
8x 6	200 x 150	219 x 159	3 x 2.5	178	168	6.50
10 x 4	250 x 100	267 x 108	3 x 2.5	194	209	8.58
10 x 5	250 x 125	267 x 133	3 x 2.5	217	219	9.73
10 x 6	250 x 150	267 x 159	3 x 2.5	240	229	10.62
10 x 7	250 x 175	267 x 194	3x 3	267	243	11.82
10 x 8	250 x 200	267 x 219	3x 3	290	259	13.28
12 x 5	300 x 125	324 x 133	4 x 2.5	217	247	15.73
12 x 6	300 x 150	324 x 159	4 x 2.5	240	257	17.16
12 x 7	300 x 175	324 x 194	4x 3	267	272	18.95
12 x 8	300 x 200	324 x 219	4x 3	290	287	20.74
12 x 10	300 x 250	324 x 267	4x 3	324	317	23.60
14 x 6	350 x 150	368 x 159	4 x 2.5	240	279	19.53
14 x 7	350 x 175	368 x 194	4x 3	267	294	21.56
14 x 8	350 x 200	368 x 219	4x 3	290	309	23.60
14 x 10	350 x 250	368 x 267	4x 3	324	339	26.44
14 x 12	350 x 300	368 x 324	4x 4	380	369	30.92

Fondi (End Caps)



Dimensione		OD	S	h1	h2	Peso appr.
inch	mm	mm	mm	mm	mm	Kg
1	25	30	1.5	15	4	0.02
1 1/4	32	38	1.5	15	5.5	0.06
1 1/2	40	44.5	1.5	15	7	0.10
2	50	57	1.5	20	9	0.19
2 1/2	65	76	2	20	13	0.25
3	80	89	2	20	15	0.30
4	100	108	2.5	20	19	0.65
5	125	133	2.5	20	24	1.10
6	150	159	2.5	20	29	1.98
7	175	194	3	20	36	2.10
8	200	219	3	20	38	2.50
10	250	267	3	20	50	3.18
12	300	324	4	20	61	4.90
14	350	368	4	20	69	7.10
16	400	419	4	20	79	9.10
18	450	457	4.5	20	87	12.90
20	500	508	5	20	96	16.90

**Riduzioni Eccentriche e
Concentriche**

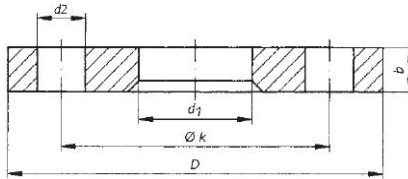


Dimensione		OD1 X OD2	Spessore Parete	Lunghezza	Peso approssimativo
DN			S1 X S2	l	
inch	mm	mm	mm	mm	Kg

1/2x 3/8	16 x 12	20 x 16	1 x 1	30	0.015
3/4x 3/8	20 x 12	25 x 16	1.5 x 1	30	0.020
3/4x 1/2	20 x 16	25 x 20	1.5 x 1	30	0.023
1x 3/8	25 x 12	30 x 16	1.5 x 1	35	0.030
1x 1/2	25 x 16	30 x 20	1.5 x 1	35	0.033
1x 3/4	25 x 20	30 x 25	1.5 x 1.5	35	0.035
1 1/4 x 3/8	32 x 12	38 x 16	1.5 x 1	50	0.038
1 1/4 x 1/2	32 x 16	38 x 20	1.5 x 1	50	0.040
1 1/4 x 3/4	32 x 20	38 x 25	1.5 x 1.5	50	0.043
1 1/4 x 1	32 x 25	38 x 30	1.5 x 1.5	50	0.045
1 1/2 x 1/2	40 x 16	44.5 x 20	1.5 x 1	80	0.05
1 1/2 x 3/4	40 x 20	44.5 x 25	1.5 x 1.5	80	0.06
1 1/2 x 1	40 x 25	44.5 x 30	1.5 x 1.5	80	0.07
1 1/2 x 1 1/4	40 x 32	44.5 x 38	1.5 x 1.5	80	0.08
2x 3/4	50 x 20	57 x 25	1.5 x 1.5	80	0.11
2x 1	50 x 25	57 x 30	1.5 x 1.5	80	0.12
2x 1 1/4	50 x 32	57 x 38	1.5 x 1.5	80	0.14
2x 1 1/2	50 x 40	57 x 44.5	1.5 x 1.5	80	0.16
2 1/2 x 1	65 x 25	76 x 30	2x 1.5	90	0.25
2 1/2 x 1 1/4	65 x 32	76 x 38	2x 1.5	90	0.27
2 1/2 x 1 1/2	65 x 40	76 x 44.5	2x 1.5	90	0.30
2 1/2 x 2	65 x 50	76 x 57	2x 1.5	90	0.33
3x 1 1/4	80 x 32	89 x 38	2x 1.5	90	0.46
3x 1 1/2	80 x 40	89 x 44.5	2x 1.5	90	0.48
3x 2	80 x 50	89 x 57	2x 1.5	90	0.49

3 x 2½	80 x 65	89 x 76	2x 2	90	0.51
4x 1½	100 x 40	108 x 44.5	2.5 x 1.5	100	0.58
4x 2	100 x 50	108 x 57	2.5 x 1.5	100	0.60
4 x 2½	100 x 65	108 x 76	2.5 x 2	100	0.66
4x 3	100 x 80	108 x 89	2.5 x 2	100	0.72
5x 2	125 x 50	133 x 57	2.5 x 1.5	140	0.86
5 x 2½	125 x 65	133 x 76	2.5 x 2	140	0.90
5x 3	125 x 80	133 x 89	2.5 x 2	140	0.94
5x 4	125 x 100	133 x 108	2.5 x 2.5	140	0.98
6 x 2½	150 x 65	159 x 76	2.5 x 2	150	1.16
6x 3	150 x 80	159 x 89	2.5 x 2	150	1.25
6x 4	150 x 100	159 x 108	2.5 x 2.5	150	1.37
6x 5	150 x 125	159 x 133	2.5 x 2.5	150	1.70
7x 3	175 x 80	194 x 89	3x 2	155	1.94
7x 4	175 x 100	194 x 108	3 x 2.5	155	1.96
7x 5	175 x 125	194 x 133	3 x 2.5	155	2.01
7x 6	175 x 150	194 x 159	3 x 2.5	155	2.08
8x 4	200 x 100	219 x 108	3 x 2.5	155	2.55
8x 5	200 x 125	219 x 133	3 x 2.5	155	2.64
8x 6	200 x 150	219 x 159	3 x 2.5	155	2.73
8x 7	200 x 175	219 x 194	3x 3	155	2.82

Flange



Dimensione			D	d1	b	k	d2	Fori per bulloni	Peso approssimativo
DN		OD							
inch	mm	mm	mm	mm	mm	mm	mm	n	Kg

3/4	20	25	105	28	14	75	14	4	0.81
1	25	30	115	33	16	85	14	4	1.11
1 1/4	32	38	140	42	16	100	18	4	1.64
1 1/2	40	44.5	150	50	16	110	18	4	1.86
2	50	57	165	62	16	125	18	4	2.20
2 1/2	65	76	185	81	16	145	18	4	2.62
3	80	89	200	94	18	160	18	8	3.32
4	100	108	220	113	18	180	18	8	3.67
5	125	133	250	138	18	210	18	8	4.54
6	150	159	285	164	18	240	22	8	5.60
7	175	194	315	200	22	270	22	8	6.50
8	200	219	340	225	20	295	22	8	7.46
10	250	267	395	273	22	350	22	12	10.30
12	300	324	445	331	24	400	22	12	12.10
14	350	368	505	375	24	460	22	16	15.70
16	400	419	565	426	26	515	26	16	20.10
18	450	457	615	465	28	565	26	20	25.40
20	500	508	670	517	30	620	26	20	30.80